

Personal, Social and Emotional Development

- Developing our friendships.
- Developing our sharing and turn taking skills through circle time activities, board games and team activities.
- Becoming more independent in our learning, knowing when we do or do not need help.
- Developing our perseverance skills to challenge our capabilities.

Expressive Art and Design

- Learning to use a variety of tools safely and correctly.
- Listening to music and exploring the different emotions and discover what stories may it be telling.

Understanding the World

- Learning about climate change and the effect we have on our planet.
- Learning about the effects of global warming on animals and their habitats.
- Exploring the different seasons and what clues there are in the environment to indicate what season it is.

Communication and Language

- Learning to use past, present and future tenses accurately
- Developing our vocabulary through thinking of adjectives to describe images of different environments.
- Using a narrative in our role play.

Physical Development

- Learning to dress ourselves and get change for P.E independently
- Developing our fine motor skills to help us with our handwriting.
- Exploring different ways we can move our bodies.
- Developing throwing and catching skills with increasing control.

Term 3

How can we save the world?

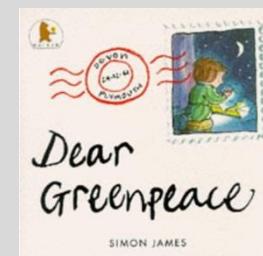
Mathematics

Number

- Learning to use different resources to help us solve addition and subtraction calculation problems
- Learning apply our knowledge of number and calculation to solve simple problems.

Shape:

- Developing our understanding of weight, height and length and money.



Literacy

Reading

- Learning new sounds and working on blending them using the Read Write Inc programme.
- Reading with speed and answering questions about what we have read.
- Understanding how stories are structured with a beginning, middle and ending.

Writing:

- Practicing letter formation.
- Using 'Fred fingers' with increasing independence to confidently write words.